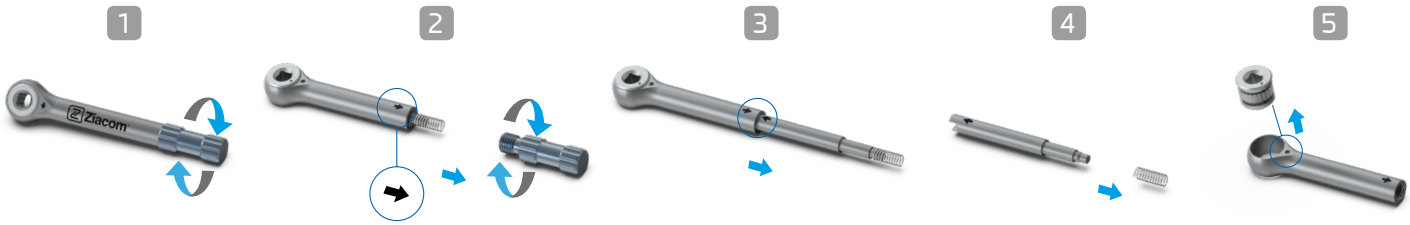
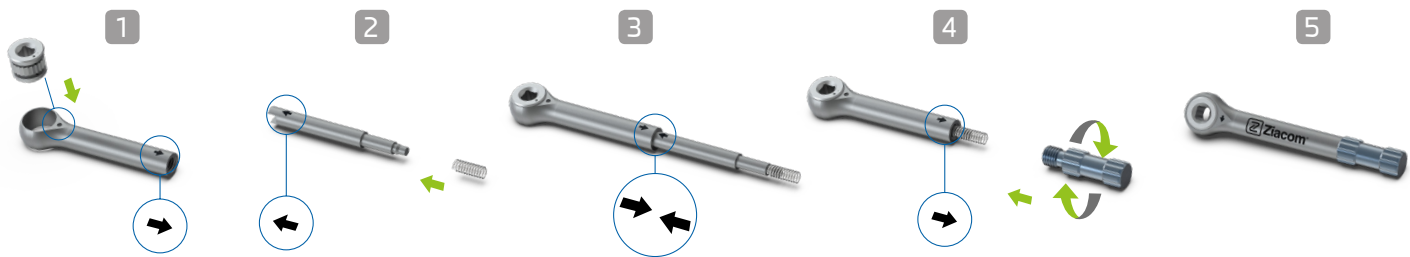


# Instructions for disassembly and assembly

## Disassembly of Ziacom® ratchets

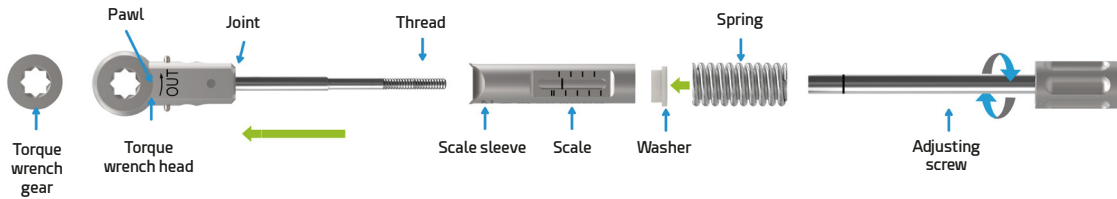


## Assembly of Ziacom® ratchets



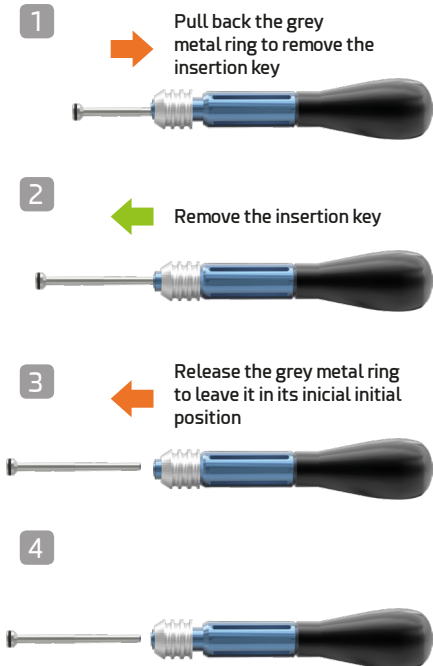
## Disassembling the adjustable torque wrench

Assembly/disassembly diagram (components may vary)



**NOTE:** the individual components come apart when the screw is removed. To assemble the torque wrench, simply assemble the individual parts in the same order and tighten the adjusting screw.

## Disassembly of DSQ micro-implant insertion handle



## Assembly of DSQ micro-implant insertion handle

